

# PARK PLAZA UTRECHT

 Park Plaza Hotel

A PERFECTLY CENTRAL  
LOCATION CLOSE TO  
UTRECHT'S MAIN  
ATTRACTIONS AND  
CENTRAL STATION.

[parkplaza.com/utrecht](https://parkplaza.com/utrecht)

  
**Park Plaza**  
UTRECHT



Pre-Function Area

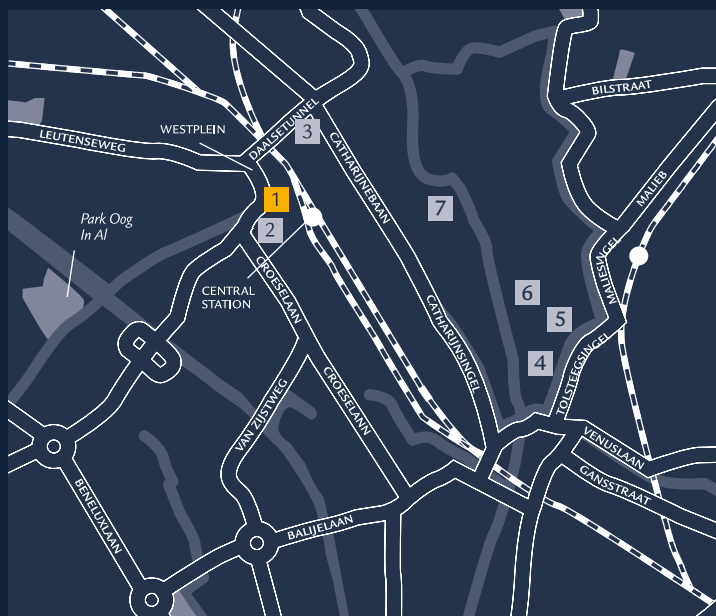
# PARK PLAZA UTRECHT

PARK PLAZA UTRECHT IS IN 'THE CENTRE OF HOLLAND', 30 MINUTES FROM AMSTERDAM AND 45 MINUTES FROM THE HAGUE. THE HOTEL IS CLOSE TO THE 'DE JAARBEURS' CONFERENCE AND EXHIBITION CENTRE, AS WELL AS THE CITY'S MUSEUMS, GIFT SHOPS AND LANDMARKS.

Utrecht is a compact city centre but is nevertheless filled with art, culture and a beautiful canal scenery. All to be explored on foot.

The Rietveld Schröder Huis, Dick Bruna Huis, Catharijneconvent, Centraal Museum and Museum Speelklok are all within walking distance, as are a wide selection of shops in the Hoog Catharijne Shopping Centre. The Wilhelminapark, Lepelenburg Park and the Botanical Gardens offer an escape from the hustle and bustle, while the famous canals which thread their way through the city are simply enchanting.

Park Plaza Utrecht is centrally located close to the city's central station and a host of lively bars, exclusive boutiques, and terraces nestle beside the beautiful canals.



Westplein 50, 3531 BL Utrecht

T: +31 (0) 30 292 5170 F: +31 (0) 30 292 5199

group utrecht@pphe.com

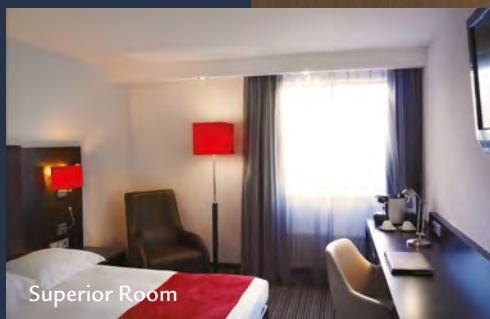
[parkplaza.com/utrecht](http://parkplaza.com/utrecht)

- |   |  |   |                   |
|---|--|---|-------------------|
| 1 | PARK PLAZA HOTEL                             | 5 | CENTRAAL MUSEUM   |
| 2 | THE JAARBEURS EXHIBITION & CONVENTION CENTRE | 6 | CATHARIJNECONVENT |
| 3 | HOOG CATHARIJNE SHOPPING CENTRE              | 7 | MUSEUM SPEELKLOK  |
| 4 | DICK BRUNA HUIS                              |   |                   |

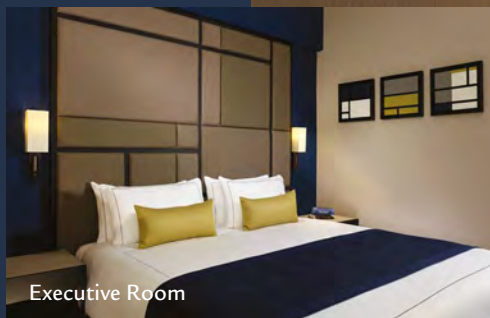
## GUEST ROOMS AND FACILITIES

Park Plaza Utrecht offers 120 spacious and air-conditioned guest rooms including Superior and refurbished Executive and Executive Iconic View Rooms, all with natural light, complimentary Wi-Fi access, 49 inch television, mini bar, safe, and tea and coffee making facilities. Executive Iconic View Rooms offer stunning views on the 6th floor. Executive level guests also enjoy a luxury bathroom with rain shower, bathrobe and slippers.

The hotel's fully renovated 24/7 up-scale fitness area includes a choice of cardiovascular and weight resistance machines.



Superior Room



Executive Room



Bathroom Executive Room

### OVERVIEW

120	GUEST ROOMS (TOTAL)		RESTAURANT
40	SUPERIOR ROOMS		BAR
60	EXECUTIVE ROOMS		FITNESS
20	EXECUTIVE ICONIC VIEW ROOMS		



Executive Iconic View Room



## RESTAURANTS AND BARS

In just a few months, the brand new bar and restaurant will open their doors. As of summer 2019, this is the go-to-place for some relaxation after a long day of meetings.

The bar has an urban outlook which is the perfect setting to enjoy a cocktail and a hearty bite, whereas the restaurant is a place to calm down and enjoy a good meal.



## MEETINGS AND EVENTS

The recently renovated meeting rooms are perfect for corporate meetings, training sessions and private events for up to 150 delegates. The dedicated conference floor, located on the top level of the hotel, boasts 10 fully equipped function rooms, each with natural daylight and even a digital flipchart. On the ground floor, the hotel's private dining room can be configured for smaller meetings and intimate dining. Free Wi-Fi connectivity is available throughout the hotel.



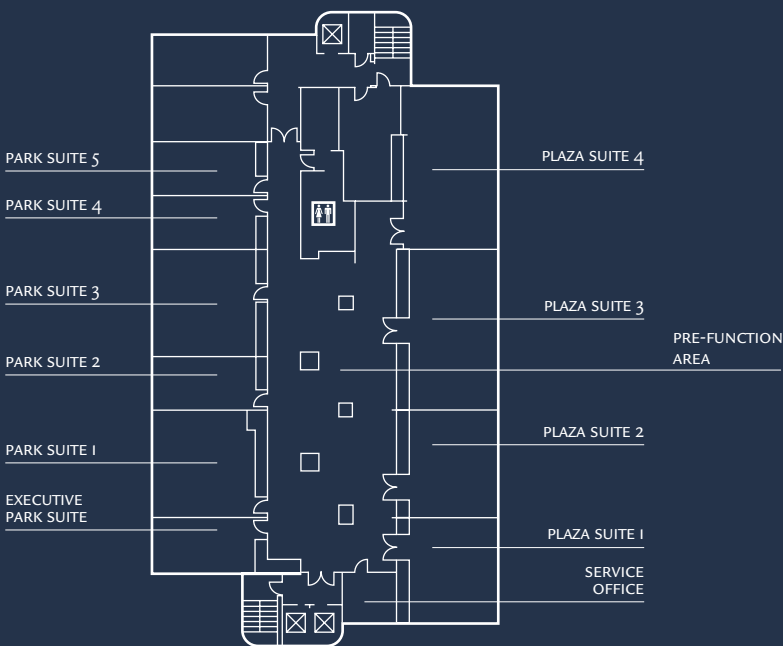
Park Suite



Park Suite Boardroom

ROOM NAME	DIMENSION W X L X H (M)	SIZE (M <sup>2</sup> )	THEATRE	BOARD ROOM	U-SHAPE	CLASS ROOM	CABARET DINNER	DINNER DANCE	RECEP- TION
<b>CONFERENCE FLOOR</b>									
PLAZA SUITE 1	7.0 x 7.0 x 2.55	49	30	22	19	22	28	-	-
PLAZA SUITE 2	7.0 x 7.0 x 2.56	49	30	22	19	22	28	-	-
PLAZA SUITE 3	10.0 x 7.0 x 2.55	70	50	32	28	40	45	-	-
PLAZA SUITE 4	10.0 x 7.0 x 2.55	70	50	26	25	30	45	-	-
PLAZA SUITE 1 & 2	14.0 x 7.0 x 2.55	98	80	42	35	60	60	-	-
PLAZA SUITE 2 & 3	17.0 x 7.0 x 2.55	119	100	-	42	77	77	-	-
PLAZA SUITE 1, 2 & 3	24.0 x 7.0 x 2.55	168	120	-	-	120	100	110	150
PARK SUITE 1	7.0 x 6.0 x 2.55	42	30	22	19	22	28	-	-
PARK SUITE 2	7.0 x 3.5 x 2.55	24.5	-	10	-	-	-	-	-
PARK SUITE 3	7.0 x 6.0 x 2.55	42	30	22	19	22	28	-	-
PARK SUITE 4	7.0 x 3.5 x 2.55	24.5	-	10	-	-	-	-	-
PARK SUITE 5	6.0 x 3.5 x 2.55	24.5	-	8	-	-	-	-	-
EXECUTIVE PARK SUITE	7.0 x 3.5 x 2.55	24.5	-	10	-	-	-	-	-
PRIVATE DINING ROOM	8.0 x 8.0 x 2.55	64	30	24	16	18	45	-	-
<b>PRE-FUNCTION AREA</b>									

### CONFERENCE FLOOR



Connect with us online

[parkplaza.com](http://parkplaza.com)



#parkplaza



Restrooms



Lift

\*These are computer generated images and are for illustrative purposes only.

03/19/05